

## DR DESCRIPTION

A series of Decorative Trim Rings to be used with 6" and 8" Kramer recessed downlight reflectors or cones. These elements may be installed with any incandescent, compact fluorescent, or HID recessed open downlight housing. Not intended for use with wall washers, lensed or adjustable downlights. Mounting plate is secured directly to the fixture frame and provides reliable and secure mounting of decorative elements. Unique design provides for field interchangeable elements to allow for maximum flexibility in meeting design community needs.

## FEATURES

- Mounting Pan (A)
  - Made out of 0.060" heavy gauge pre-galvanized steel. It is secured to the fixture frame with three #8 – 32 screws. Four #8 – 32 flathead screws support weight of decorative elements. Will accommodate up to 2" ceiling thickness.
- Trim Ring (B)
  - Die formed 0.060" thick solid aluminum ring is painted flat white to match most ceiling finishes.
- Decorative Elements (C)
  - Decorative elements are either 0.090" thick, solid aluminum or 0.250" thick glass or acrylic. Aluminum elements are available in clear or gold satin anodized finish. They are also available in smooth white finish. Glass or acrylic elements come in a variety of colors as well as natural finish and frosted accent elements.
- Stems (D)
  - Four, stain finish aluminum posts and decorative knobs are anodized clear to retain appearance over life.

## KRAMER DECOR-TRIM RINGS

# KDR81SL KDR82GL-SL KDR81GC KDR83AA-AA-AA



Single soda lime glass ring with frosted center — KDR81SL



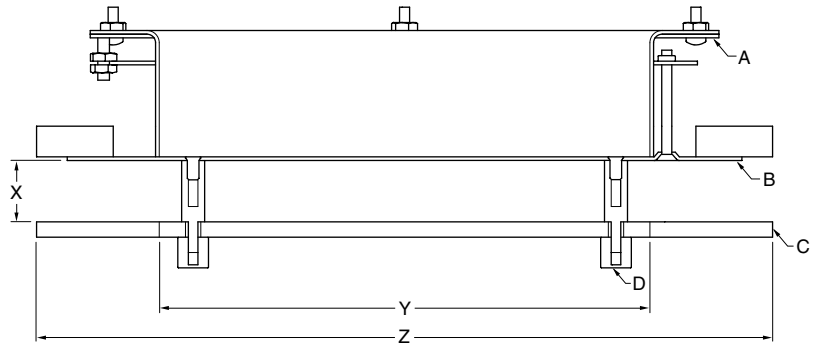
Single cobalt blue glass ring with open center — KDR81GC



One clear soda lime glass ring and one frosted glass ring — KDR82GL-SL



Three aluminum rings – clear stain finish — KDR83AA-AA-AA



## DIMENSIONS

|    | X            | Y             | Z              |
|----|--------------|---------------|----------------|
| 6" | 1.00" (25mm) | 6.00" (152mm) | 10.00" (254mm) |
| 8" | 1.00" (25mm) | 8.00" (203mm) | 12.00" (305mm) |

## HOW TO SPECIFY

| Select: <b>KDR</b> | Nominal Fixture Opening | Number of Rings                          | Style  | Finish  |
|--------------------|-------------------------|--|--|---|
|                    | 6 = 6"<br>8 = 8"        | 1 = 1 Ring<br>2 = 2 Rings<br>3 = 3 Rings | A = Aluminum Ring<br>S = Solid Glass Ring w/Frosted Center<br>G = Glass Ring w/Open Center<br>D = Acrylic Ring w/Open Center | A = Satin Finished Clear Anodized Aluminum<br>G = Satin Finished Gold Anodized Aluminum<br>L = "Green" Soda Lime Glass<br>B = "White" Borosilicate Glass<br>C = Cobalt Blue<br>R = Ruby Red<br>W = Smooth White Paint |
| Example 1-Ring:    | <b>KDR 6</b>            | <b>1</b>                                 | <b>S</b>   | <b>L</b>  |
| Example 2-Ring:    | <b>KDR 6</b>            | <b>2</b>                                 | <b>G</b>   | <b>L : SL</b>   |
| Example 3-Ring:    | <b>KDR 6</b>            | <b>3</b>                                 | <b>G</b>   | <b>L : GL : SL</b>  |