

# Squares & Rectangles

**kramer**  
L I G H T I N G

## Style . . . Performance . . . Balance . . .

Recessed luminaires are a cherished element in the architectural lighting palette and offer a range of **possibilities**. But it's difficult to balance the artistic and creative needs of architects and designers with the performance demands of engineers and specifiers due to limited options. Kramer Lighting **blends style** and **performance** into our new square and rectangle recessed luminaires, with the most complete, high performing line in the industry. Kramer's Squares and Rectangles allow for a creative lighting design while satisfying rational specifications.

Our new design allows for **flexible** layouts and **sustainable** design options. Kramer Lighting offers a wide selection of lamp sources, wattages, aperture sizes and reflector finishes to provide a **complete line** of square and rectangle recessed luminaires. Kramer's comprehensive range allows architects, lighting designers, specifiers and engineers to maintain the **continuity** desired within an entire lighting design.

# SQUARES &



**RECTANGLES**



# Architectural-Grade Quality

## Compact Fluorescent Lighting

Our compact fluorescent line has been created from the ground up. Kramer designed the housing and optics around square and rectangle apertures and the new amalgam CFL lamps; this results in high efficiency and excellent cut-off. For hassle free serviceability, the ballast can be accessed through the aperture.

### Ventless housing

Housing designed for optimal lamp operating temperature by minimizing air exchange. Black housing traps stray light.

### Compact dimensions

Housing design (shallow and narrow) dimensioned for maximum installation ease in 16" O.C. or T-bar construction.

### Mounting Ears

Adjustable from below or above ceiling. Accepts bar stock, C channel or 1/2" conduit for support

### Two-piece optic construction

Deep-recess design efficiently and evenly distributes light while eliminating distracting glare and brightness.

### Heavy-gauge steel

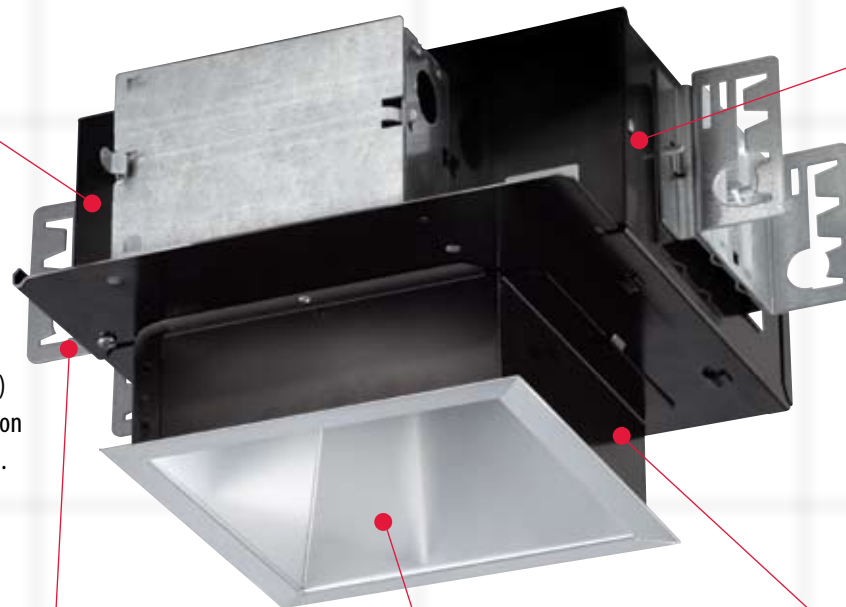
Housing constructed of heavy-gauge steel for maximum structural integrity.

### Electronic ballast

Universal voltage ballast (120-277V, 50Hz or 60Hz) with high power factor and EOL (end of life) protection.

### Thick or thin ceilings

Extra-deep, 2" throat for easy installation in thick or thin ceilings.



# Compact Fluorescent Lighting Squares

	Aperture Size	Number of Lamps	Lamp Type						Lens Type				
			PLT				QPL		None	Clear Glass	C73	Micro Prism Glass	
			26W	32W	42W	57W	18W	26W					
Downlight Vertical Lamp	6"	1	.	.	.			.	.	.	.	.	
	Horizontal Lamp	4"	1	.	.			.	.	.	.	.	
Horizontal Lamp	6"	1	.	.	.			.	.	.	.	.	
	6"	2						.	.	.	.	.	
	8"	1	.	.	.	.		.	.	.	.	.	
	8"	2	.	.	.	.		.	.	.	.	.	
	Cross Baffle Four Cell Horizontal Lamp	6"	1	.	.	.			.	.	.	.	.
		6"	2						.	.	.	.	.
Lensed Wall Wash Horizontal Lamp	8"	1	.	.	.	.		.	.	.	.	.	
	8"	2	.	.	.	.		.	.	.	.	.	
	4"	1	.	.				.	.	See spec sheets for lens detail			
	6"	1	.	.	.			.	.				
8"	1	.	.	.			.	.					
8"	2	.	.	.			.	.					

# Compact Fluorescent Lighting Rectangles

	Aperture Size	Number of Lamps	Lamp Type						Lens Type			
			PLT				QPL		None	Clear Glass	C73	Micro Prism Glass
			26W	32W	42W	57W	18W	26W				
Downlight Horizontal Lamp	4" x 8"	1	.	.	.	.	.	.	.	.	.	.
	6" x 12"	1				.			.	.	.	.
	6" x 12"	2	.	.	.	.	.	.	.	.	.	.
Cross Baffle Two Cell Horizontal Lamp	4" x 8"	1	.	.	.	.	.	.	.	.	.	.
	6" x 12"	1				.			.	.	.	.
	6" x 12"	2	.	.	.	.	.	.	.	.	.	.
Lensed Wall Wash Horizontal Lamp	4" x 8"	1	.	.	.	.	.	.	See spec sheets for lens detail			
	8" x 4"	1	.	.	.	.	.	.				
	6" x 12"	1				.						
	6" x 12"	2	.	.	.		.	.				
	12" x 6"	1				.						
	12" x 6"	2	.	.	.		.	.				

# Compact Fluorescent Luminaire Ordering Guide

Example shown is Square Horizontal Fixture

Aperture Size	Shape	Lamp No.	Lamp	Optic	Lens Media		Reflector/Cone Finish		Flange Finish		Voltage	Options		
4	SQ	1	57PLT	2	2 Piece	Blank	No Lens	SGC	Satin Glow Clear	FF	Full Flange same finish as cone	120	DL	Dimming 3 wire
6	<b>B</b>	2	42PLT	XB	Cross Baffle	CL	Clear Glass	C	Specular Clear	WF	Painted White Flange	277	DM	Power Line Dimming Ballast
8		<b>C</b>	32PLT	LWW	Lensed Wall Wash	PL	Prismatic Glass	SGCG	Satin Glow Champagne Gold	XF	Flange Painted Custom Color	347	U	Universal
4" x 8"			26PLT			SL	Micro-prism Glass	SGBR	Satin Glow Bronze				EM	Emergency Battery Pack
8" x 4"			26QPL					SGWH	Satin Glow Wheat	<b>G</b>			FS	Fusing
6" x 12"			18QPL					SGPE	Satin Glow Pewter				MC	Mounting Channel
12" x 6"	<b>A</b>							SGGR	Satin Glow Graphite					
								SGB	Satin Glow Black					
								W	High Gloss White					
								S	Soft Satin Glow (add as prefix to all satin glow finishes)					
								Textures	<b>E</b> <b>F</b>					
								CC	Corrugated					
								BP	Ball Peen					
								SC	Stucco Satin					

## Footnotes

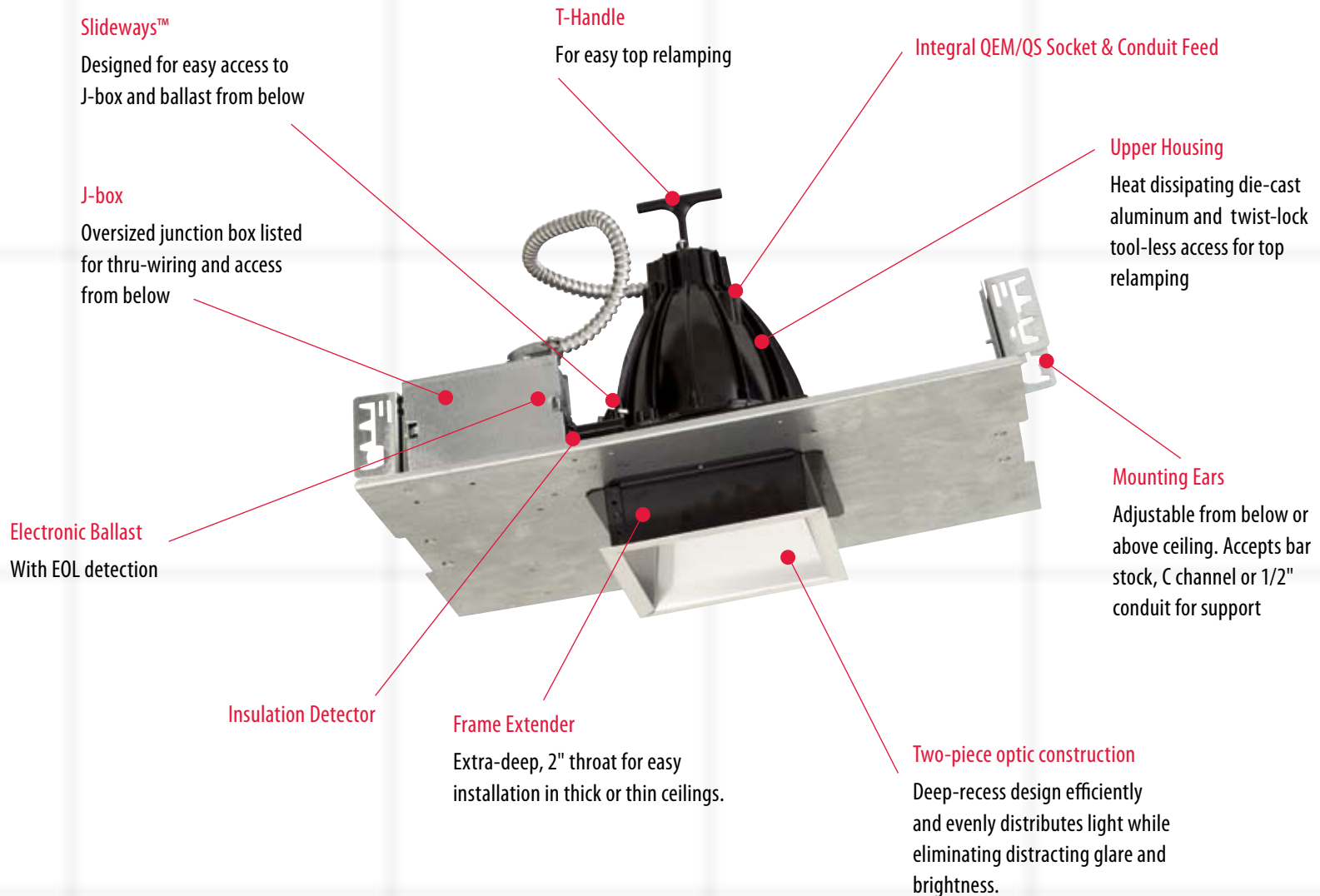
- A** Dimensions are nominal; see spec sheets for exact dimensions.
- B** For Rectangular Luminaires shape is blank as the aperture dimensions indicate a rectangular shape
- C** For vertical lamp fixtures (6" aperture only) leave field blank
- D** LWW optic has integral lens media. When specifying LWW, Lens Media should be blank.
- E** Textured finishes not available with Cross Baffle or Lensed Wall Wash fixtures
- F** See page 23 for color and texture descriptions
- G** Textured finishes not paintable



# Architectural-Grade Quality

## HID Lighting

Our HID line is designed around multiple lamp types and wattages to satisfy various applications and specifications. To accommodate such flexibility, our T4 and T6 luminaires feature a round segmented upper reflector for precise beam control and high efficiency performance. All HID products also come standard with a solid state electronic ballast with EOL (end of life) circuitry and improved lamp wattage regulation for optimal lamp color stability over life. Select HID products include our new, patent pending Slideways™ feature with top relamping and easy maintenance.





# HID Lighting

## Squares

### Downlight

Aperture Size	Lamp Type	T4			T6			T6			PAR20	PAR30	PAR38	MR16	R111	ED17
	Maximum Wattage	70			70			150			39	70	150	20	70	150
	Distribution*	ND	MD	WD	ND	MD	WD	ND	MD	WD						
4"		.	.	.	.	.	.				.	.		.		
6"		.	.	.				.	.	.	.	.	.	.	.	.

### Adjustable 35° Vertical 358° Rotation

Aperture Size	Lamp Type	T4			T6			PAR20	PAR30	PAR38	MR16	R111
	Maximum Wattage	70			70			39	70	150	20	70
	Distribution*	ND	MD	WD	ND	MD	WD					
4"								.			.	
6"		.	.	.	.	.	.		.	.	.	.

### Lensed Wall Wash

Aperture Size	Lamp Type	T6	ED17	PAR20	PAR30	PAR38
	Maximum Wattage	70	100	39	70	100
4"		.		.	.	
6"		.	.		.	.

\* ND—Narrow Distribution; MD—Medium Distribution; WD—Wide Distribution

# HID Lighting

## Rectangles

### Downlight

Aperture Size	Lamp Type	T6	PAR20	PAR30	PAR38	MR16	ED17	R111
	Maximum Wattage	150	39	70	150	20	100	70
	Number of Lamps	1	2	2	2	2 3	1 2	2
4" x 8"		•	•	•		•	•	
6" x 12"				•	•	•	•	•

### Adjustable 35° Vertical 358° Rotation

Aperture Size	Lamp Type	PAR20	PAR30	PAR38	MR16	R111
	Maximum Wattage	39	70	100	20	70
	Number of Lamps	2	2	2	2 3	2
4" x 8"		•	•		•	
6" x 12"		•	•	•	•	•

### Lensed Wall Wash

Aperture Size	Lamp Type	T6	PAR20	PAR30	PAR38	ED17
	Maximum Wattage	70	39	70	100	100
	Number of Lamps	2	2	2	2	1 2
4" x 8"		•	•	•		•
8" x 4"		•	•	•		•
6" x 12"				•	•	•
12" x 6"				•	•	•

## Slideways For Select Square Products

Kramer Lighting is proud to introduce Slideways™, a new, patent pending feature designed for select HID and Incandescent square products. It provides easy access to the ballast, J-box and mounting ears for splice inspection service and adjustability after product is installed. Slideways operates by sliding the lamp housing sideways from the open position to the closed position for access through the aperture.

### HID



Open



Closed

### Incandescent



Open



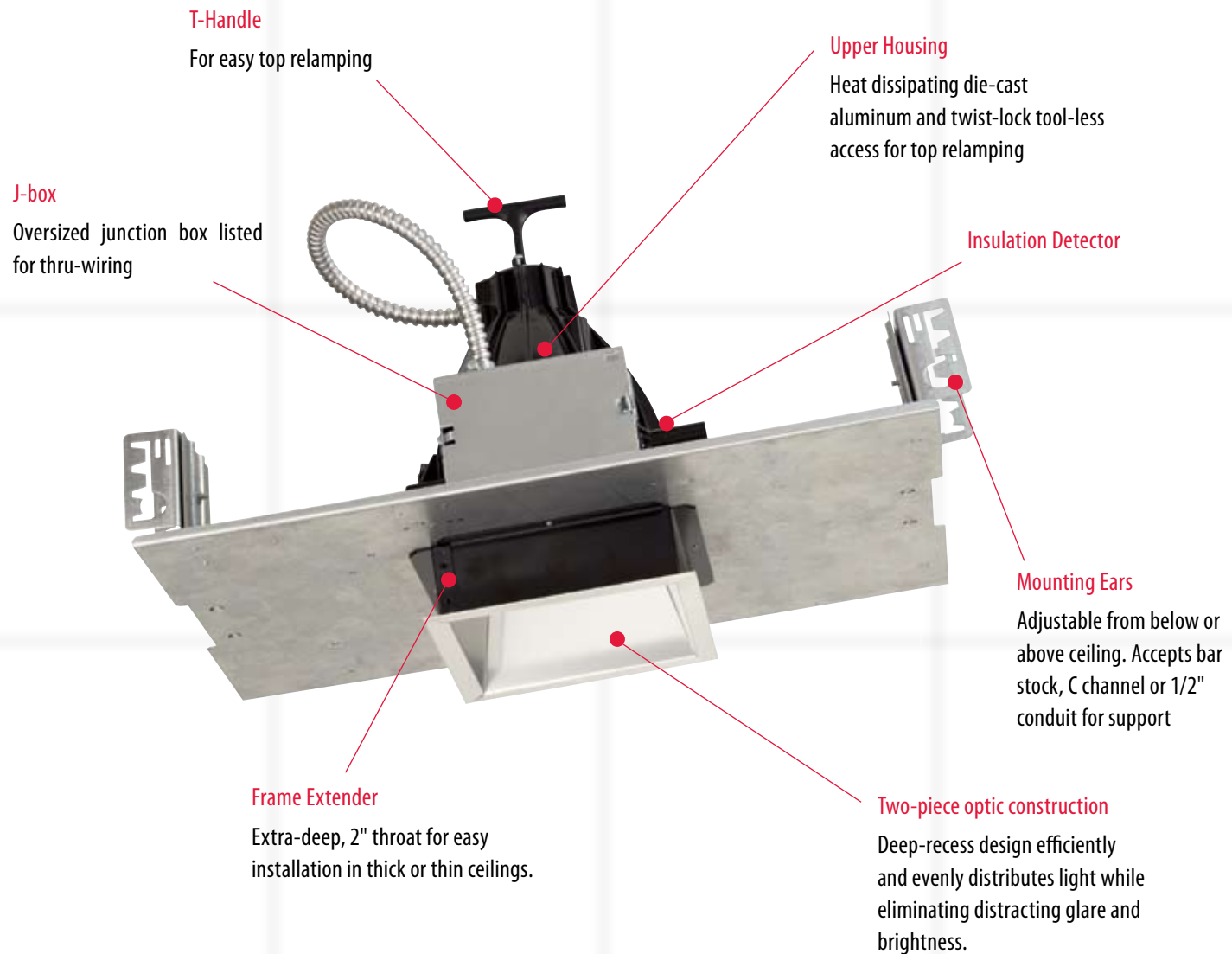
Closed



# Architectural-Grade Quality

## Incandescent Lighting

Our Incandescent line is developed for both low and line voltage lamp sources. The new T4 clear lamp optic features a round segmented reflector for precise beam control and high efficiency performance. Our MR16 adjustable products offer a hot aiming option for lamp positioning up to 35° of adjustment while maintaining socket position during relamping. Select incandescent products also include our new, patent pending Slideways™ feature for ease of maintenance and top relamping from below.



# Incandescent Luminaire Ordering Guide

Example shown is Square Fixture

KL 6 SQ 1 75 MR16LV ND CL SGC FF 120 MC

Aperture Size	Shape	Lamp No.	Wattage	Lamp	Optic	Distribution	Lens Media	Reflector/Cone Finish	Flange Finish	Voltage	Options					
4	SQ	1	500	MR16LV	Blank	Downlight	VD	Very Narrow	Blank	No Lens	SGC	Satin Glow Clear	FF	Full Flange same finish as cone	120	FS Fusing
6	<b>B</b>	2	250	AR70LV	XB	Cross Baffle	Distribution	CL	Clear Glass	C	Specular Clear	MC	Mounting Channels			
8		3	150	AR111LV	ADJ	Adjustable	ND	Narrow Distribution	PL	Prismatic Glass	SGCG	Satin Glow Champagne Gold	WF	Painted White Flange	TR	Top Relamping
4" x 8"	<b>C</b>		100	A19	LWW	Lensed Wall Wash	MD	Medium Distribution	SL	Micro-prism Glass	SGBR	Satin Glow Bronze	XX	Flange Painted Custom Color	H	Hot Aim
8" x 4"			75	PAR16			WD	Wide Distribution	<b>D</b>	<b>E</b>	SGWH	Satin Glow Wheat				
6" x 12"			50	PAR20							SGPE	Satin Glow Pewter	<b>H</b>			
12" x 6"	<b>A</b>			PAR30							SGGR	Satin Glow Graphite				
				PAR38							SGB	Satin Glow Black				
				T4							W	High Gloss White				
				BT15							S	Soft Satin Glow (add as prefix to all satin glow finishes)				
											Textures	<b>F</b>	<b>G</b>			
											CC	Corrugated				
											BP	Ball Peen				
											SC	Stucco Satin				

## Footnotes

- A** Dimensions are nominal; see spec sheets for exact dimensions.
- B** For Rectangular Luminaires shape is blank as the aperture dimensions indicate a rectangular shape
- C** For square aperture luminaire leave this field blank
- D** LWW optic has integral lens media. When specifying LWW, Lens Media should be blank.
- E** T4 product comes standard with glass enclosure matched to the distribution. Leave this field blank.
- F** Textured finishes not available with Cross Baffle or Lensed Wall Wash fixtures
- G** See page 23 for color and texture description
- H** Textured finishes not paintable

# Incandescent Lighting

## Squares

### Downlight

Aperture Size	Lamp Type	T4 Quartz				T4 Quartz				MR16	AR70	AR111	BT15	A19	PAR 16	PAR 20	PAR 30	PAR 38
	Maximum Wattage	250				500				75	50	75	150	100	75	50	75	250
	Distribution*	VN	ND	MD	WD	VN	ND	MD	WD									
4"		.	.	.	.					.	.		.	.	.	.	.	
6"		.	.	.	.	.	.	.	.	.		.	.	.	.		.	.

### Adjustable 35° Vertical 358° Rotation

Aperture Size	Lamp Type	T4 Quartz			MR16	AR70	AR111	PAR16	PAR20	PAR 30	PAR38
	Maximum Wattage	250			75	50	75	75	50	75	150
	Distribution*	ND	MD	WD							
4"					.	.		.	.	.	
6"		.	.	.	.		.			.	.

### Lensed Wall Wash

Aperture Size	Lamp Type	T4 Quartz	MR16	BT15	A19	PAR16	PAR20	PAR30	PAR38
	Maximum Wattage	150	75	150	100	75	50	75	150
4"		.	.	.	.	.	.	.	
6"		.	.	.	.			.	.

\* VN—Very Narrow Distribution; ND—Narrow Distribution; MD—Medium Distribution; WD—Wide Distribution

# Incandescent Lighting

## Rectangles

### Downlight

Aperture Size	Lamp Type	T4 Quartz	MR16	AR70	AR111	BT15	PAR16	PAR20	PAR30	PAR38
	Maximum Wattage	150	75	50	75	150 150	75	50	75	150
	Number of Lamps	1	2 3	2	2	1 2	2	2	2	2
4"		•	•	•		•	•	•		
6"			•	•	•	•			•	•

### Adjustable 35° Vertical 358° Rotation

Aperture Size	Lamp Type	MR16	AR70	AR111	PAR 16	PAR 20	PAR 30	PAR 38
	Maximum Wattage	75	50	75	75	50	75	150
	Number of Lamps	2 3	2	2	2	2	2	2
4" x 8"		•	•		•	•	•	
6" x 12"		•	•	•			•	•

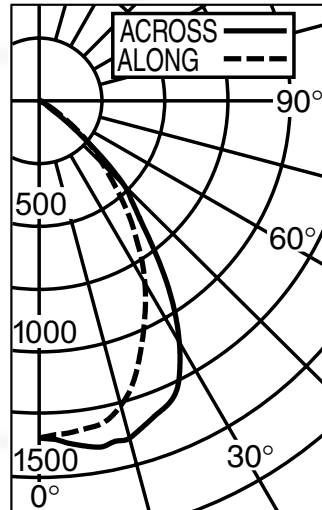
### Lensed Wall Wash

Aperture Size	Lamp Type	T4 Quartz	BT15	PAR 16	PAR 20	PAR 30	PAR 38
	Maximum Wattage	150	150 150	75	50	75	150
	Number of Lamps	1	1 2	2	2	2	2
4" x 8"		•	•	•	•	•	
8" x 4"		•	•	•	•	•	
6" x 12"			•			•	•
12" x 6"			•			•	•

# Photometrics

## Recessed 6" Fluorescent Square Horizontal 1-Lamp 42W PLT 2-Piece Optic Downlight

Efficiency: 64.6% SC:1.0



IES File: ITL56138

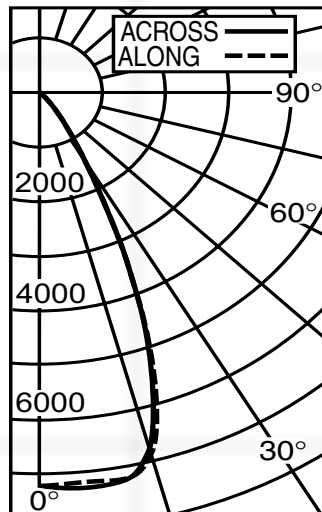
### CONE OF LIGHT

DISTANCE TO ILLUMINATED PLANE	INITIAL NADIR FOOTCANDLES	BEAM DIAMETER
6'	37	6.7'
8'	21	8.9'
10'	13	11'
12'	9	13.5'
14'	7	15.5'

Beam Diameter is to 50% of maximum footcandles. Footcandle values are initial and are rounded to the nearest footcandle.

## Recessed 6" HID Square 70W T4 Metal Halide Downlight

Efficiency: 76.2% SC: 0.8



IES File: 21335

### CONE OF LIGHT

DISTANCE TO ILLUMINATED PLANE	INITIAL NADIR FOOTCANDLES	BEAM DIAMETER
6'	201	4.7'
8'	113	6.3'
10'	72	7.9'
12'	50	9.5'
14'	37	11'

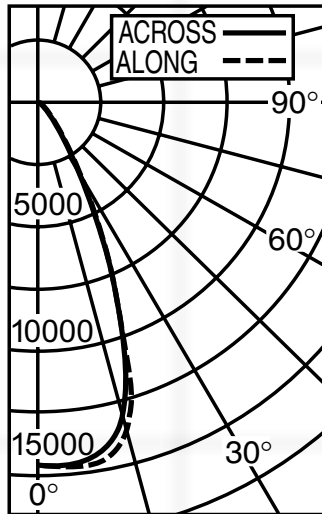
Beam Diameter is to 50% of maximum footcandles. Footcandle values are initial and are rounded to the nearest footcandle.

\*For additional photometrics go to: [www.kramerlighting.com](http://www.kramerlighting.com)

# Photometrics

## Recessed 6" HID Square

150W T6 Ceramic Metal Halide Downlight Efficiency: 66.8% SC: 0.8



IES File: 21216

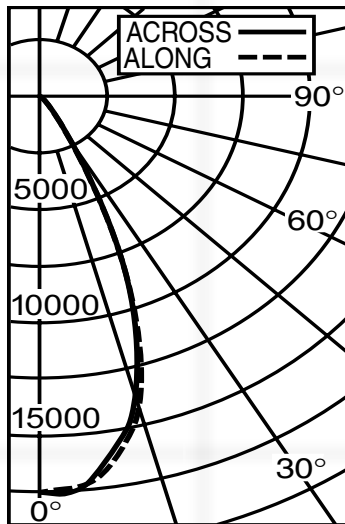
### CONE OF LIGHT

DISTANCE TO ILLUMINATED PLANE	INITIAL NADIR FOOTCANDLES	BEAM DIAMETER
6'	404	4.7'
8'	227	6.3'
10'	145	7.9'
12'	101	9.3'
14'	74	11'

Beam Diameter is to 50% of maximum footcandles. Footcandle values are initial and are rounded to the nearest footcandle.

## Recessed 6" Incandescent Square

500W T4 Quartz Downlight Efficiency: 78.3% SC: 0.7



IES File: 21413

### CONE OF LIGHT

DISTANCE TO ILLUMINATED PLANE	INITIAL NADIR FOOTCANDLES	BEAM DIAMETER
6'	487	4.2'
8'	247	5.7'
10'	175	7.2'
12'	122	8.5'
14'	89	9.9'

Beam Diameter is to 50% of maximum footcandles. Footcandle values are initial and are rounded to the nearest footcandle.

\*For additional photometrics go to: [www.kramerlighting.com](http://www.kramerlighting.com)

# Squares and Rectangles



## Downlight

Both square and rectangular fixtures available with one or two lamps. Apertures range from 4" up to 8" for square fixtures; 4" x 8" and 6" x 12" for rectangular. Clear, prismatic glass or micro-prism glass lens. Choose from nine reflector colors and three textures.



## Adjustable

Both square and rectangular fixtures available with one or two lamps. Apertures range from 4" up to 8" for square fixtures; 4" x 8" and 6" x 12" for rectangular. Clear, prismatic glass or micro-prism glass lens. Choose from nine reflector colors and three textures.



## Lensed Wall Wash

Both square and rectangular fixtures available with one or two lamps. All are lensed. Apertures range from 4" to 8" for square fixtures; 4" x 8," 6" x 12" and 12" x 6" for rectangular. Choose from nine reflector colors.



## Cross Baffle

Both square and rectangular fixtures available with one or two lamps. Apertures include 6" and 8" for square fixtures; 4" x 8" and 6" x 12" for rectangular. Clear, prismatic glass or micro-prism glass lens. Choose from nine reflector colors.

# Finishes and Textures

Reflector/Cone Colors	Standard			Optional			
	Texture	Flange Finish		Texture (Downlight Only) <sup>2</sup>			Flange Finish
	Smooth	Same as Cone	Painted as Customer Specified	Corrugated	Ball Peen	Stucco Satin	Same as Cone
Satin Glow Clear	*	•	•	•	•	•	•
Satin Glow Champagne Gold	*	•	•	•	•	•	•
Satin Glow Bronze	*	•	•	•	•	•	•
Satin Glow Wheat	*	•	•	•	•	•	•
Satin Glow Pewter	*	•	•	•	•	•	•
Satin Glow Graphite	*	•	•	•	•	•	•
Satin Glow Black	•	•	•	•	•	•	•
High Gloss White	•	•	•	•	•	•	•
Specular Clear	•	•	•				

\* Cones also available in Soft Satin Glow

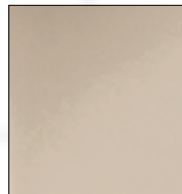
## Finishes<sup>1</sup>



Satin Glow Clear



Satin Glow Champagne Gold



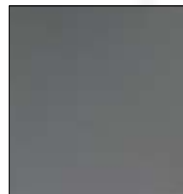
Satin Glow Bronze



Satin Glow Wheat



Satin Glow Pewter



Satin Glow Graphite



Satin Glow Black



High Gloss White



Specular Clear

## Textures<sup>2,3</sup>



Corrugated



Ball Peen



Stucco Satin

<sup>1</sup> Colors shown are approximate. Samples are available upon request.

<sup>2</sup> Optional textures not available on Cross Baffle or Lensed Wall Wash fixtures.

<sup>3</sup> No painted flanges on texture finishes.



1200 92nd Street    Sturtevant, WI 53177    Phone: (800) 236-6800    Fax: (262) 504-5415    In Canada (800) 473-1234    [kramerlighting.com](http://kramerlighting.com)

Printed in USA

©2006 Kramer Lighting

FG# CAT/BRCH-KSR